

eX700 Field

Beautiful Power

EXOS

Key Features

- Industry 4.0 Product Concept
- Multitouch with Gesturing
- Brilliant Resolution Display
- Multiple Protocols
- OPC UA pub/Sub* Server and Client
- CODESYS V3 with Ethernet I/O Stacks
- Resistant to Scratches, UV and Chemicals
- Fast Boot <10 secs
- Fast Writing 50MByte / sec
- 3 Ethernet Networks with different PHY

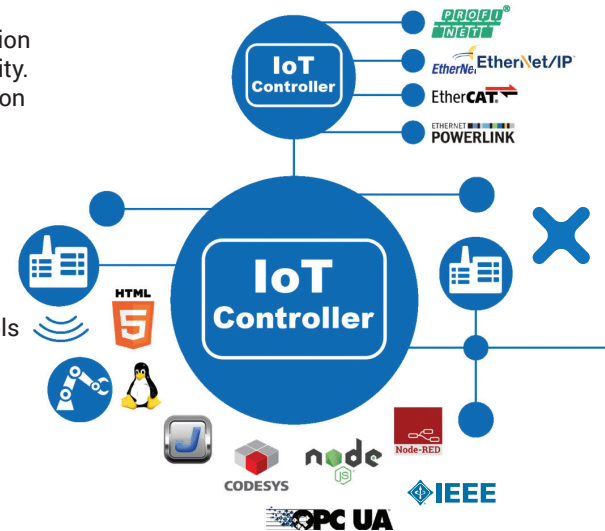
eX700 Series

A beautiful product, with tremendous technical flexibility backed by a company with 45 years in the industry and with a market price similar to previous models.

The eX700 Series represents a ground breaking product to come to market: The Revolutionary IIoT Controller.

The product's concept is permitting a prudent investment into the implementation of IIoT and hence Industry 4.0 compatibility. As such it provides a true all in one solution covering many functions such as:

- As a powerful **Browser** with industry standard Web engine powering state of the art Chromium browser
- As a **Gateway** with 3 Ethernet networks, OPC UA pub/sub* Server and Client, TSN connectivity* and multiple protocols
- As a powerful **HMI** using JMobile inside with multi touch operation in a brilliant high resolution display
- As a **PLC** with the CODESYS V3 and Ethernet distributed I/O stacks and extremely high processing power



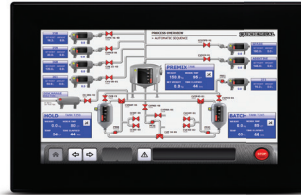
*Road map for 2017



	eX705	eX707
Display - Colors	5" TFT 16:9 LED - 64K	7" TFT 16:9 LED - 16M
Resolution	800x480, WVGA	800x480, WVGA
Brightness	400 Cd/m ² typ.	400 Cd/m ² typ.
Dimming	Yes	Yes
Touchscreen	True Glass Projected Capacitive	True Glass Projected Capacitive
Portrait Mode	Yes	Yes
CPU	ARM Cortex-A8 - single core 1 GHz	ARM Cortex-A9 - dual core 1 GHz
User Memory	4 GB Flash	4 GB Flash
Serial	RS-232, RS-485, RS-422, MPI software configurable	RS-232, RS-485, RS-422, MPI software configurable
Ethernet	2x 10/100 Mbit with integrated Switch	1x 10/100/1000 Mbit 2x 10/100 Mbit with integrated Switch
USB	1 Host Interfaces	2 Host Interfaces (1x v2.0, 1x v2.0/v1.1)
Reports	PDF / USB Printer	PDF / USB Printer
PDF Reader	Optional	Yes
Video Player	No	Yes
IP Camera	Frame / Streaming MJPEG	Frame / Streaming MJPEG
Communication / Gateway	4 protocols	4 protocols
Battery	Rechargeable Lithium Battery	Rechargeable Lithium Battery
Expansion Slot	1 Optional Plug-in	2 Optional Plug-in
Memory card	SD Card Slot	SD Card Slot
Power Supply	24 Vdc (10 to 32 Vdc)	24 Vdc (10 to 32 Vdc)
Current Consumption	0.8A at 24Vdc (max.)	0.9A at 24Vdc (max.)
Operating Temperature	-20 to +60 °C	-20 to +60 °C
Storage Temperature	-40 to +85 °C	-40 to +85 °C
Operating and storage humidity	5 - 85%, RH non-condensing	5 - 85%, RH non-condensing
Vector Graphics, Object dynamics, TrueType fonts, Alarms with historical list, Recipes and Password, Trends, Multilanguage, Real Time Clock	Yes	Yes
Faceplate (LxH)	147x107 mm	187x147 mm
Cut-out (AxB)	136x96 mm	176x136 mm
Depth (D+T)	56 + 8 mm	47 + 8 mm
IP front / rear	IP69K / IP20	IP69K / IP20
Approvals	CE, DNV, RCM, cULus Class I, Div. 2.	CE, DNV, RCM, cULus Class I, Div. 2.



eX710



eX715






eX721

10.1" TFT 16:9 LED - 16M 1280x800, WXGA 600 Cd/m ² typ. Yes True Glass Projected Capacitive Yes ARM Cortex-A9 - dual core 1 GHz 4 GB Flash RS-232, RS-485, RS-422, MPI software configurable 1x 10/100/1000 Mbit 2x 10/100 Mbit with integrated Switch 2 Host Interfaces (1x v2.0, 1x v2.0/v1.1) PDF / USB Printer Yes Yes Frame / Streaming MJPEG 4 protocols Rechargeable Lithium Battery 2 Optional Plug-in SD Card Slot 24 Vdc (10 to 32 Vdc) 1.0A at 24Vdc (max.) -20 to +60 °C -20 to +70 °C 5 - 85%, RH non-condensing Yes 282x197 mm 271x186 mm 56 + 8 mm IP69K / IP20 CE, DNV, RCM, cULus Class I, Div. 2.	15.6" TFT LED - 16M 1366x768, XGA 300 Cd/m ² typ. Yes Projected capacitive, Multitouch - 2 points gestures Yes ARM Cortex-A9 - quad core 1 GHz 8 GB Flash RS-232, RS-485, RS-422, MPI software configurable 1x 10/100/1000 Mbit 2x 10/100 Mbit with integrated Switch 2 Host Interfaces (2x v2.0, max. 100 mA) PDF / USB Printer Yes Yes Yes Frame / Streaming MJPEG 4 protocols Rechargeable Lithium Battery 2 Optional Plug-in SD Card Slot 24 Vdc (10 to 32 Vdc) 1.4A at 24Vdc (max.) -20 to +60 °C -30 to +80 °C 5 - 85%, RH non-condensing Yes 422x267 mm 411x256 mm 56 + 8 mm IP66 / IP20 CE	21.5" TFT LED - 16M 1920x1080, Full HD 300 Cd/m ² typ. Yes Projected capacitive, Multitouch - 2 points gestures Yes ARM Cortex-A9 - quad core 1 GHz 8 GB Flash RS-232, RS-485, RS-422, MPI software configurable 1x 10/100/1000 Mbit 2x 10/100 Mbit with integrated Switch 2 Host Interfaces (2x v2.0, max. 100 mA) PDF / USB Printer Yes Yes Yes Frame / Streaming MJPEG 4 protocols Rechargeable Lithium Battery 2 Optional Plug-in SD Card Slot 24 Vdc (10 to 32 Vdc) -20 to +60 °C -30 to +80 °C 5 - 85%, RH non-condensing Yes 552x347 mm 541x336 mm 56 + 8.5 mm IP66 / IP20 CE
--	--	---



Accessories

<p>PLCM01</p> <p>PLCM02</p> <p>PLCM03</p> <p>PLCM04</p> <p>PLCM05</p> <p>PLCM06</p> <p>PLCM07</p>	<p>Plug-in module CAN</p> <p>Plug-in module for KNX/EIB (TP interface)</p> <p>Plug-in module RS-232</p> <p>Plug-in module RS-422/485 with optical insulation</p> <p>Plug-in extender for use with PLIO03 (only for eTOP605 and eTOP504)</p> <p>Plug-in module Profibus DP slave 12 Mb</p> <p>Secure Cloud Connector</p>	
<p>CODESYS V3 SoftPLC</p> <p>PLCM01-CDS</p> <p>PLCM02-CDS</p> <p>PLCM05-CDS</p>	<p>CODESYS V3 activation license</p> <p>Plug-in module CAN + CODESYS V2</p> <p>Plug-in module for KNX/EIB (TP interface) + CODESYS V2</p> <p>Plug-in module CODESYS V2</p>	
<p>PLIO03</p> <p>PLIO04</p> <p>PLIO06</p> <p>PLIO07</p>	<p>I/O Module with 20 DI 24VDC, 12 DO 24VDC 0,5 A, 8 AI (4 diff or 8 singl or 4 PT100 or 4 TC), 4 AO, 1 PT100 Cold Junct</p> <p>I/O Module with 10 DI 24VDC, 10 DO SSR 1.4 A, 4 Programmable AI voltage/PT100/TC, 4 AI voltage, 1 PT100</p> <p>Compact I/O module. 8 DI, 6 DO, 1 Relay Output</p> <p>Compact I/O module. 2 Relay Outputs</p>	





Call your local Exor Representative

TOPCO
It's all about control

TOPCO Control & Automation Ltd.
14 Bazelet St. Industrial Zone Mitzpe Sapir
P.O.B 12373 Zur Yigal 4486200 Israel

T: (972)-9-7494000 | F: (972)-9-7494774
topcoinfo@topco.co.il | www.topco.co.il
f TopcoControlandAutomation

טופקו בקרה ואוטומציה בע"מ
רחוב בזלת 14 א. התעשייה מצפה ספיר
ת.ד. 12373 צור יגאל מיקוד 4486200

IloT industry 4.0 ready



PLATFORM

powered by EXOR